



2022 Region One Orchestra Auditions

When: Saturday, October 1, 2022

Where: Auditions will be held at Dorman High School

- Address: 1050 Cavalier Way, Roebuck, SC 29376

What to Expect: During the audition students will perform...

- One of the (2) scales named in the packet, played in quarter notes at 80bpm
- Selected excerpts from the region concert music (included)
- A sight-reading example (students will be given 30 seconds to silently study the music before performing)

Audition Fee: Each student should provide a **\$10 audition fee**.

Please give all money to your orchestra teacher. Checks should be made out to your school, and the teacher will send one check for all students registering.

Audition Results: Audition results will be available through your orchestra teacher the week following the auditions. If selected the region orchestra event will take place at Chesnee High School on November 18-19, 2022.

Region Weekend Conductors:

- **6-8 Orchestra**—Taniesha Pooser
- **9-10 Orchestra**—Kathy Perry
- **11-12**—Dr. Leslie Hicken

SCMEA Region 1 Audition Excerpts

11-12 Violin

A major scale



G melodic minor scale



Excerpt #1—Rest (Frank Tichelli)

65 Più mosso (♩ = ca. 80)

mf cresc. div. f

71 rit. ff

75 A Tempo (♩ = c. 72) Molto legato

78 fff

84 3

91 unis. rit. p

Musical notation for Excerpt #1—Rest (Frank Tichelli). The excerpt is in treble clef, key of A major (two sharps). It begins at measure 65 with a tempo marking of 'Più mosso' and a quarter note equal to approximately 80 beats per minute. The music features a variety of dynamics including mezzo-forte (mf), crescendo (cresc.), fortissimo (ff), fortississimo (fff), and piano (p). There are also markings for 'div.' (divisi) and 'unis.' (unison). The excerpt includes a trill in measure 84 and a triplet in measure 85. The tempo changes to 'A Tempo' (♩ = c. 72) at measure 75, marked 'Molto legato'. The piece concludes with a 'rit.' (ritardando) marking and a piano (p) dynamic.

Excerpt #2—Rhythm Dances (Brian Balmages)

104 (V) 107 *f*

111 (b) *f*

118 124 *ff*

125

Detailed description: This musical score is for a piano piece in 2/4 time. It features a single melodic line on a treble clef staff. The key signature has one flat (B-flat). The score is divided into four systems. The first system (measures 104-107) begins with a whole rest, followed by a half note chord (B-flat and D) marked with a 'V' and a crescendo hairpin. The second system (measures 111-114) contains eighth and sixteenth notes with various articulations like 'V' and 'b'. The third system (measures 118-124) shows a series of chords and single notes, ending with a half note chord marked 'ff'. The fourth system (measures 125-128) continues with eighth and sixteenth notes, some with slurs and 'V' marks.

Excerpt #3—Molly on the Shore (Percy Aldridge Grainger)

75 marked and short (marc. e stacc.) *mf* short and sharp (stacc.) *louden (cresc.)*

80 *f*

85 *mf*

90 *pp*

Detailed description: This musical score is for a piano piece in 2/4 time. It features a single melodic line on a treble clef staff. The key signature has one sharp (F-sharp). The score is divided into five systems. The first system (measures 75-78) includes dynamic markings 'mf' and 'louden (cresc.)' and articulations 'marked and short' and 'short and sharp'. The second system (measures 80-83) features triplets and eighth notes with 'f' dynamics. The third system (measures 85-88) continues with triplets and eighth notes, marked 'mf'. The fourth system (measures 90-93) shows a series of eighth notes with 'pp' dynamics. The fifth system (measures 95-98) concludes with a half note chord marked 'pp'.

Excerpt #4— Molly on the Shore (Percy Aldridge Grainger)

125 *ff* *p* louden lots (molto cresc.) short (stacc.) 130

135 *ff*

140 *fff*

145 *mf* *f* *pp*

150 *mf* *f* feelingly (cresc.) 155

Excerpt #5— Rhythm Dances (Brian Balmages)

160 4 164 *mp* *f*

169 *p* *f* *p* *mp* 173

175 *f* *p*

181 182 *ff*

SCMEA Region 1 Audition Excerpts

11-12 Viola

B-flat major scale



A melodic minor scale



Excerpt #1—Rest (Frank Tichelli)

65 Più mosso (♩ = ca. 80)

71 *f* *div.* *rit.* *unis.* *ff* 75 A Tempo (♩ = c. 72) Molto legato *div.*

77 *fff*

83 84 *p* *3*

90 *unis.* *rit.* *p*



Excerpt #2—Molly on the Shore (Percy Aldridge Grainger)

12 bowed (arco)

ff heavy (p. sante)

65

70

75

80

85

louden (cresc.)

plucked (pizz.)

marked and short (more, and stacc.)

Excerpt #3—Molly on the Shore (Percy Aldridge Grainger)

135

140

145

150

155

short (stacc.)

fff

fff

louden (cresc.)

mp

mf (or f)

p > pp

Excerpt #4—Rhythm Dances (Brian Balmages)

75 77

f

82 87 4

mp *f*

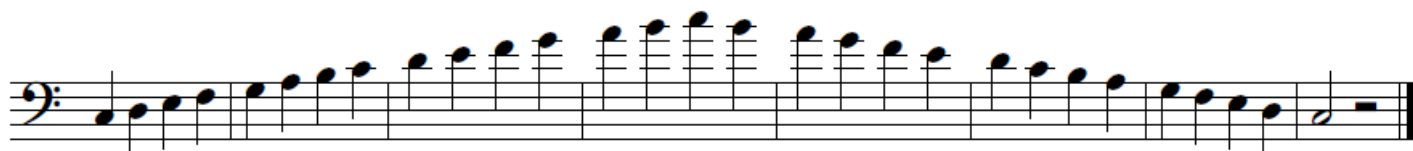
91 99 *arco*

mp *mf* *mp*

SCMEA Region 1 Audition Excerpts

11-12 Cello

C major scale



D melodic minor scale



Excerpt #1—Rest (Frank Tichelli)

65 Più mosso (♩ = ca. 80)

A musical score for the piece "Rest" by Frank Tichelli, specifically measures 65 through 92. The score is written in bass clef with a key signature of one sharp (F#). The tempo is marked "Più mosso" with a quarter note equal to approximately 80 beats per minute. The score includes various dynamics and performance instructions. Measures 65-70 are marked *mp* and *mf cresc.*. Measures 71-74 are marked *rit.* and *f*. Measures 75-78 are marked *A Tempo* (♩ = c. 72), *Molto legato*, and *ff*. Measures 79-83 are marked *fff*. Measures 84-91 are marked *un.* and *p*. The score includes various musical notations such as slurs, ties, and dynamic markings.

Excerpt #2—Rhythm Dances (Brian Balmages)

38 *pizz.* *arco* 2 *mf*

46 48 *f* 2

54 *mp* 3

60 *mf* *div.*

66 67 *non div.* *f*

Excerpt #3— Rhythm Dances (Brian Balmages)

105 107 *f*

111

117

123 124

129 132

Excerpt #4—Molly on the Shore (Percy Aldridge Grainger)

Handwritten musical score for "Molly on the Shore" (Percy Aldridge Grainger), Excerpt #4. The score is written in bass clef with a key signature of one sharp (F#). It includes various performance instructions and dynamic markings.

Key performance instructions and markings include:

- bowed (arco)**: Indicated at the top right and near measure 85.
- heavy (pesante)**: Indicated below the first staff.
- mf feelingly and clingingly (espressivo e legato)**: Indicated below measure 70.
- plucked (pizz.)**: Indicated below measure 80.
- louden (cresc.)**: Indicated below measure 80.
- louden more (sempre cresc.)**: Indicated below measure 80.
- f feelingly (espress.)**: Indicated below measure 85.
- pp**: Indicated below measure 90.

Measure numbers 65, 70, 75, 80, 85, and 90 are marked in boxes. The score includes various musical notations such as slurs, ties, and fingerings (e.g., 1, 2, 3, 4).

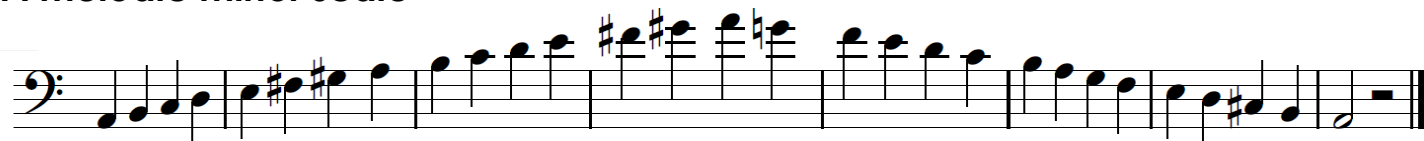
SCMEA Region 1 Audition Excerpts

11-12 Bass

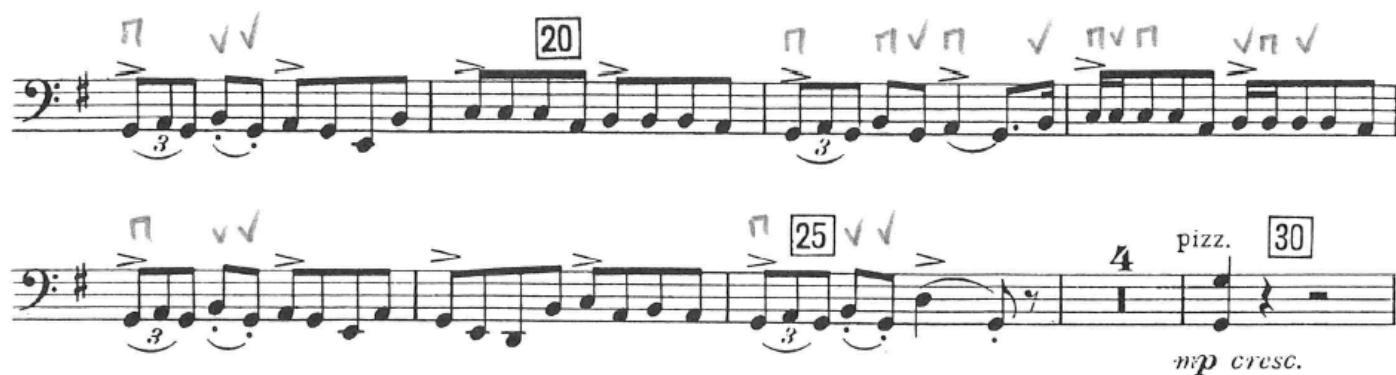
G major scale



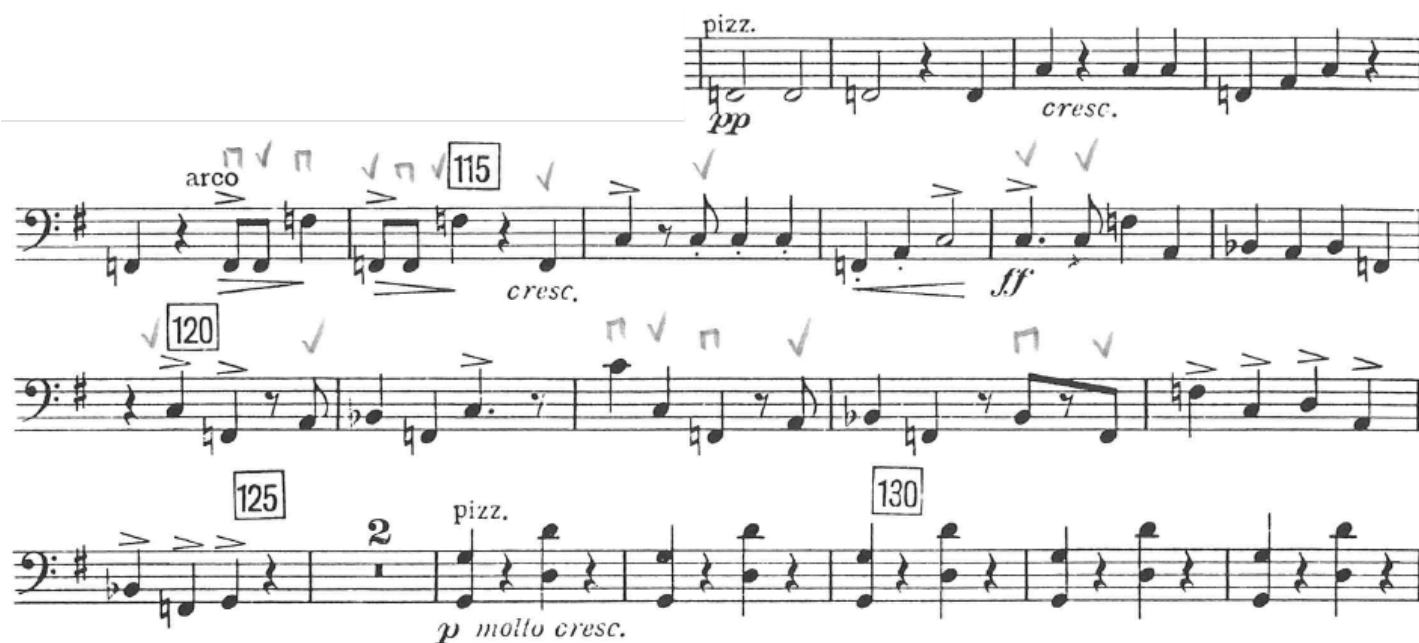
A melodic minor scale



Excerpt #1—Molly on the Shore (Percy Aldridge Grainger)



Excerpt #2—Molly on the Shore (Percy Aldridge Grainger)



Excerpt #3—Rest (Frank Tichelli)

65 Più mosso (♩ = ca. 80) *rit.* *f* *div.* *ff* 75 A Tempo (♩ = c. 72) Molto legato

78 *fff*

83 84

90 *rit.* *ppp*

Excerpt #4—Rhythm Dances (Brian Balmages)

arco *mf* *mp* 2 54

48 *f* *mp*

56 *mf*

63 67 *f*